

# kings place EVENTS

LONDON'S BEST CONNECTED VENUE

CRAFTED BY

GREEN &  
FORTUNE





Welcome to  
**KINGS PLACE**

A hub for conferences and events, music, art, dialogue, and food, all housed in an award-winning building minutes from Kings Cross St Pancras. Kings Place Events provides catering, and production in-house, making it a one stop shop for your event.



**LONDON VENUE & CATERING AWARDS 2024**  
**WINNER**  
**BEST EVENT VENUE  
OVER 300 / UNDER 1500  
ATTENDEES RECEPTION STYLE**

**LONDON VENUE & CATERING AWARDS 2025**  
**10th ANNIVERSARY**  
**WINNER**  
**BEST VENUE TEAM  
UP TO 30 TEAM MEMBERS**

# KING'S CROSS LONDON'S CREATIVE HUB

Kings Place is a modern and purpose built venue, in the heart of the rejuvenated King's Cross. The venue boasts an enviable location, overlooking the picturesque Regent's Canal.

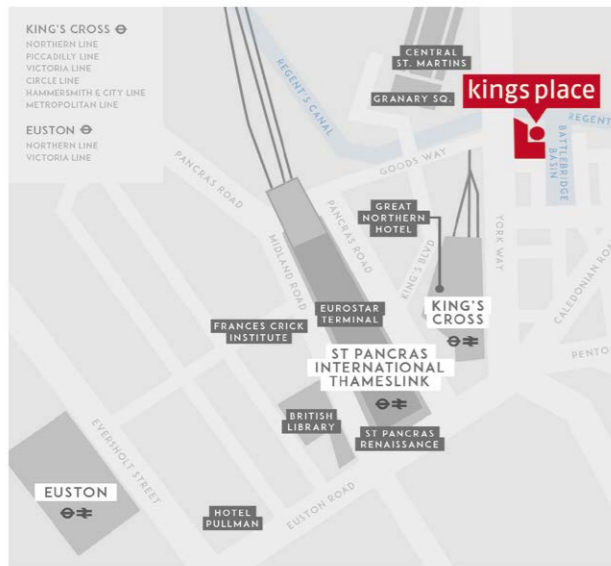
King's Cross is rapidly becoming a destination for tech, creative and music enterprises with increasing numbers of international organisations moving their headquarters to the area.

With an emerging new foodie scene, high-profile retail brands and excellent transport connections – both national and international – it's the place to be right now and the place to hold your next event.

## Within 1 mile of King's Cross Station:

- 20 cultural institutions
- 21 museums and galleries
- 29 libraries and archives
- Over 50 hotels
- Over 200 restaurants

## FANTASTIC TRANSPORT CONNECTIONS



TRAVEL		✈
<b>London Heathrow Airport</b>	15mi / 24km	
<i>50 Minutes by train</i>		
<b>London Gatwick Airport</b>	26mi / 43km	
<i>50 Minutes by train</i>		
<b>London City Airport</b>	8mi / 12km	
<i>45 Minutes by Underground and DLR</i>		
RAIL & UNDERGROUND		🚆
<b>Kings Cross, St Pancras International and Eurostar Terminal</b>		
<i>5 Minute walk</i>		

CSER

Profits from Kings Place Events, support the Kings Place Music Foundation, a registered charity.



Kings Place boasts the highest BREEAM operational sustainability rating for property management ever accomplished in the UK. The building was planned as an environmentally sustainable development encompassing the below in the venue design:

- The wavy glass front façade is a key contributor to the buildings good environmental performance.
- The oak wood in Hall One is made from sustainable wood sourced from a single tree that was naturally felled. Saplings were planted to replace this tree.
- An area of 'green' roof enhances the ecology of the scheme and encourages bird and invertebrate species.

We operate a waste reduction strategy. All our waste, including food, is either recycled or goes to refuse-derived fuel, anaerobic digestion or waste recovery, meaning 100% is diverted from landfill. Bamboo and palm plates are used for all hot food station events. These are compostable and can be disposed of with food waste.

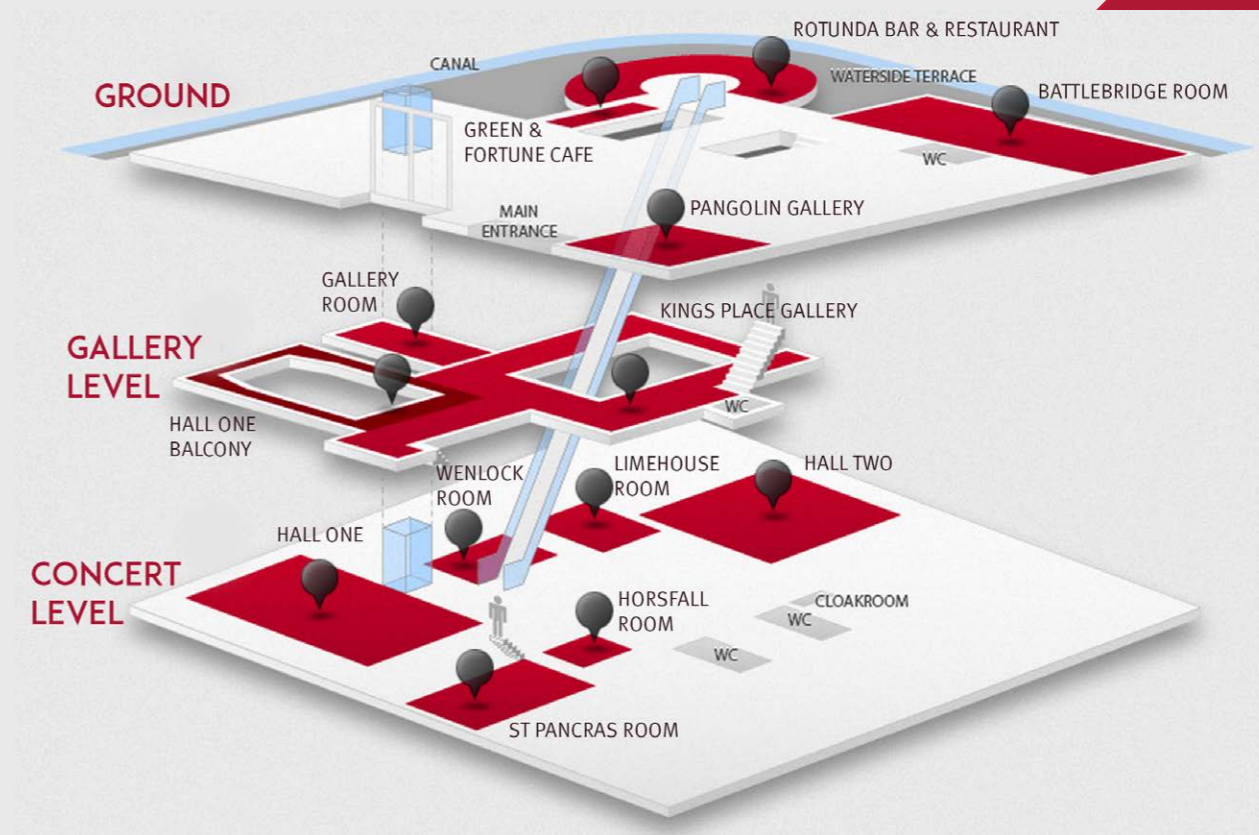
# BUILDING LAYOUT, CAPACITIES & RATES

Rooms at Kings Place are hired on a full or half day rate. Full day room hire timings are from 08:30 – 17:30hrs. Half day rates are charged at either 08:30 – 12:30hrs or 13:00 – 17:30hrs. Evening rates are from 18:00 – 23:00hrs. All of our rooms - apart from the Kings Place Gallery and Music Foyer - include an LCD screen, or projector and screen, as well as comprehensive AV. For full details of all the room inclusions please contact us.

Kings Place's range of event spaces spread throughout three immaculate floors. From the waterside Battlebridge Room on the ground floor down to the breathtaking Hall One on the concert level, all our rooms and spaces are easily accessible and clearly signposted within the building for the ease of your delegates.

For a full interactive map of Kings Place please see [www.kingsplaceevents.co.uk](http://www.kingsplaceevents.co.uk)

Room:	Theatre	Cabaret	Boardroom	U-Shape	Hollow Square	Classroom	Seated Lunch/Dinner	Dinner/Dance	Receptions
Hall One	400	-	-	-	-	-	-	-	-
Hall Two	200	100	38	45	54	72	160	-	250
Battlebridge Room	100	90*	24	32	36	30	180	140	400
Gallery Room	60	24	32	-	-	30	32	-	60
Kings Place Gallery	-	-	-	-	-	-	120	-	400
St Pancras Room	100	56	26	31	42	48	90	-	125
Music Foyer	-	-	-	-	-	-	-	-	200
Limehouse Room	37	18	26	-	-	30	20	-	37
Wenlock Room	32	12	24	-	-	24	20	-	32
Horsfall Room	24	-	10	-	-	9	10	-	20
Rotunda Bar & Restaurant Exclusive	-	-	-	-	-	-	80	80	250
Rotunda Private Dining Room	30	24	16	20	-	-	30	-	40



Room:	Hire:	Full Day £	Half Day £	Evening £	Day Delegate Rate £	DDR Min. Numbers	Catering Space included in DDR
Hall One		14,700	9,370	9,345	115	250	Kings Place Gallery
Hall Two		7,350	4,620	4,620	115	150	Music Foyer
Battlebridge Room		5,775	3,150	4,200	100	60	-
Gallery Room		2,100	1,050	1,050	-	-	-
Kings Place Gallery		4,000	2,645	2,625	-	-	-
St Pancras Room		4,000	2,470	2,470	-	-	-
Music Foyer		2,100	1,420	1,470	-	-	-
Limehouse Room		1,260	735	735	-	-	-
Wenlock Room		1,260	735	735	-	-	-
Horsfall Room		735	420	370	-	-	-

# HALL ONE

Full Day Room Hire £14,700  
Half Day Room Hire £9,370  
Evening Room Hire £9,345  
Day Delegate Rate £115

Capacities: 400  
DDR Minimum Numbers 250  
Catering Space - DDR Gallery Level

Dimensions: L 22m (72ft) x  
W 13m (42ft) x H 12m (40ft)



See our virtual tour



Fixed seating auditorium Up to 400 delegates

State-of-the-art AV, sound & lighting technology Tiered seating and excellent sight-lines

Access to a spacious green room and individual changing rooms

Technical management from tech booth at the back of the auditorium

Close to five break-out spaces around a striking foyer area

Extensive production inclusions:

Complimentary delegate Wi-Fi / 1 x Stage Manager / 2 x Technicians (AV and Sound) / 16,000 lumens digital projector / Motorised and retractable projection screen / Analog Way NeXtage 08 seamless video switcher with up to 8 independent video inputs and 2 outputs / iMac 21.5 inch / 1 x Lectern / 1 x comfort monitor with wooden hide / 1 x Microcue2 USB cueing system / Digidesign D-Show Mixing Desk / d&b audiotechnik PA system / 1 x Shure gooseneck lectern microphone / Laptop audio and iPod connection / ROBE LED house lighting

Ideal for events of up to 200 delegates

Wooden floor and wall panels

Removable seating and stage

Popular for smaller conferences in theatre and cabaret style

Built in sound-proofed glass technical booth

Food and drink can be served inside

Extensive production inclusions:

Complimentary delegate Wi-Fi / 1 x Stage Manager / 2 x Technicians (AV and Sound) / 8,000 lumens digital projector / Motorised and retractable projection screen / Barco Folsom Encore Controller SC and 1 video processor with up to 6 video inputs / iMac 21.5 inch / 1 x Lectern / 1 x comfort monitor with wooden hide / 1 x Microcue2 USB cueing system / Yamaha M7CL Mixing Desk / d&b audiotechnik PA system / 1 x Shure gooseneck lectern microphone / Laptop audio and iPod connection / ROBE LED house lighting



# HALL TWO

Full Day Room Hire £7,350, Half Day Room Hire £4,620  
Evening Room Hire £4,620,  
Day Delegate Rate £115 DDR Minimum Numbers 150,  
Catering Space - DDR Music Foyer

## Capacities

Theatre 200 Cabaret 100 Boardroom 38  
U-Shape 32 Hollow Square 54 Classroom 72  
Seated lunch 160 Receptions 250 Stand up Buffet 200  
Sit Down Buffet 120 Refreshments 200

Room Dimensions: L 15m (49ft) x W 14m (46ft) x H 6m (20ft)



See our virtual tour

# BATTLEBRIDGE ROOM

Full Day Room Hire £5,775  
 Half Day Room Hire £3,150  
 Evening Room Hire £4,200  
 Day Delegate Rate £100

## Capacities

Theatre 100 Cabaret 90 Boardroom 24  
 U-Shape 32 Hollow Square 36 Classroom 30  
 Seated lunch 180 Stand up Buffet 280  
 Sit Down Buffet 140 Refreshments 300  
 Receptions 400 DDR Minimum Numbers 60

Room Dimensions: L 36m (118ft)  
 x W 8m (26ft) x H 4m (13ft)

Minimum catering spend - £3,000 daytime  
 - £4,000 evening



See our virtual tour



Sits on the edge of the Regent's Canal's Battlebridge Basin  
 Natural daylight, picturesque canal views and floor- to-ceiling windows  
 Suitable for seated dinners, receptions, small conferences and social events  
 Spacious outdoor covered terrace makes it a great spot for summer and Christmas parties  
 Warm copper and wood panelling add interest to the room with branding options also available  
 A partition wall allows the room to be used for a range of set ups

Recently refurbished to include a new wooden floor and LED changeable colour wash lighting  
 Conveniently located close to Hall One and Hall Two making it an ideal breakout room  
 Excellent acoustics for presentations, meetings, small conferences, dinners and drinks receptions  
 Whitewash walls make the St Pancras room a fantastic 'blank canvas' space that can be easily branded



# ST PANCRAS ROOM

Full Day Room Hire £4,000 Half Day Room Hire £2,470  
 Evening Room Hire £2,470

## Capacities:

Theatre: 100 Cabaret: 56 Boardroom: 26 U-shape: 31  
 Hollow Square: 42 Receptions: 125 Lunch/Dinner Rounds: 90  
 Stand-Up Buffet: 100 Sit-Down Buffet: 60 Refreshments: 120  
 Classroom: 48

Dimensions: L 13m (43 ft) x W 10m (33ft) x H 3m (10ft)



See our virtual tour

# GALLERY ROOM

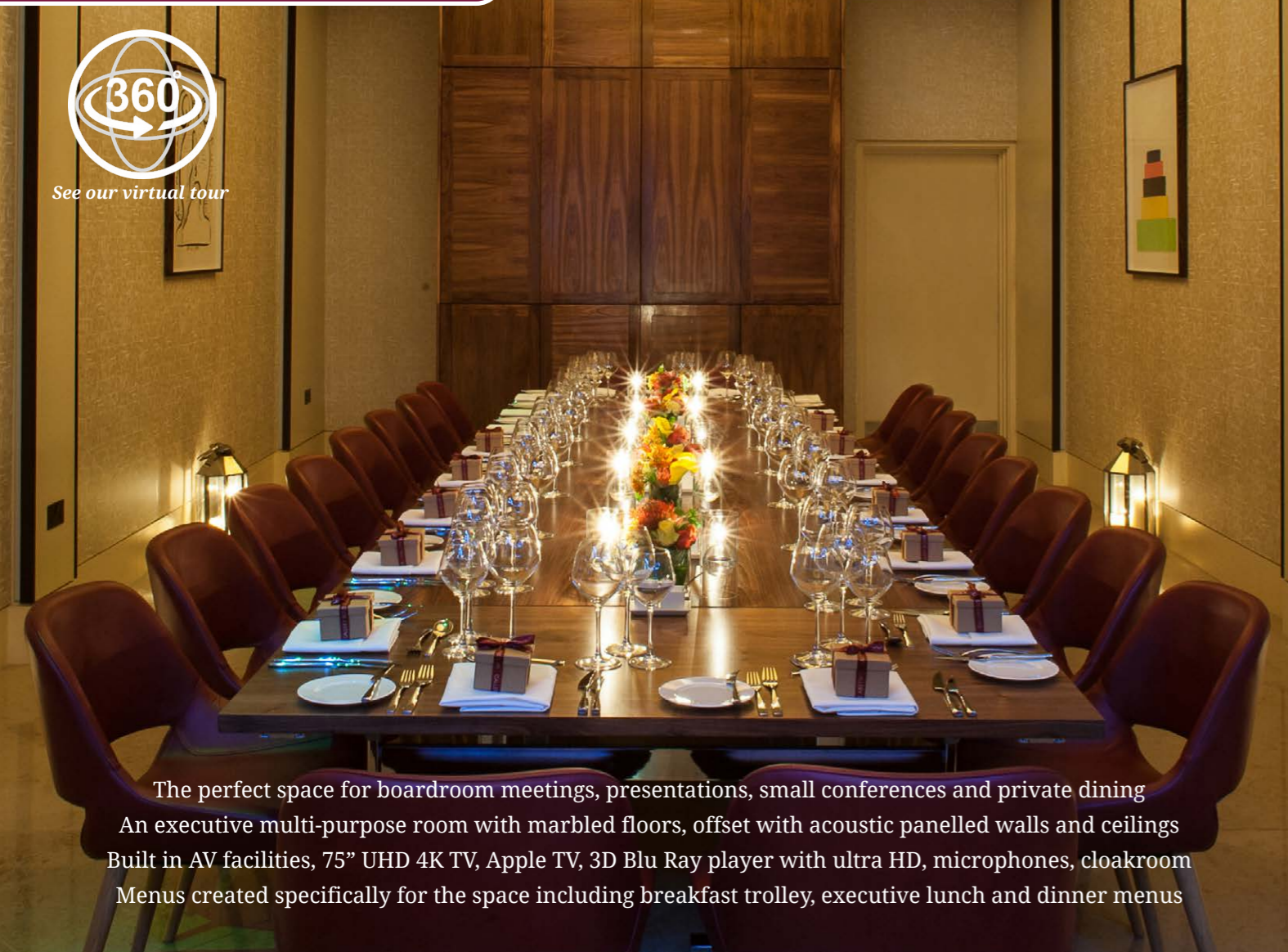
Full Day Room Hire £2,100  
Half Day Room Hire £1,050  
Evening Room Hire £1,050

## Capacities

Theatre 60 Cabaret 24 Boardroom 32 Class-  
room 30 Seated lunch 32 Receptions 60  
Room Dimensions: L 12.6m (41.3ft) x W 4.7m (15.4ft)



See our virtual tour



The perfect space for boardroom meetings, presentations, small conferences and private dining

An executive multi-purpose room with marbled floors, offset with acoustic panelled walls and ceilings

Built in AV facilities, 75" UHD 4K TV, Apple TV, 3D Blu Ray player with ultra HD, microphones, cloakroom

Menus created specifically for the space including breakfast trolley, executive lunch and dinner menus



See our virtual tour

## SMALLER SPACES

We have a number of smaller spaces perfect as breakouts as part of a larger event or used individually for meetings.

Limehouse Room  
Theatre 37 Boardroom 26 Reception 37  
Wenlock Room  
Theatre 32 Boardroom 24 Reception 32  
Horsfall Room  
Theatre 24 Boardroom 10 Reception 20

Room hire from £370.

# ROTUNDA

Private Dining Room  
Boardroom 16 Dining 30 Standing 50

Bar - 150 Restaurant - Dining 80 Standing 150

Full Venue Hire, including terrace  
250

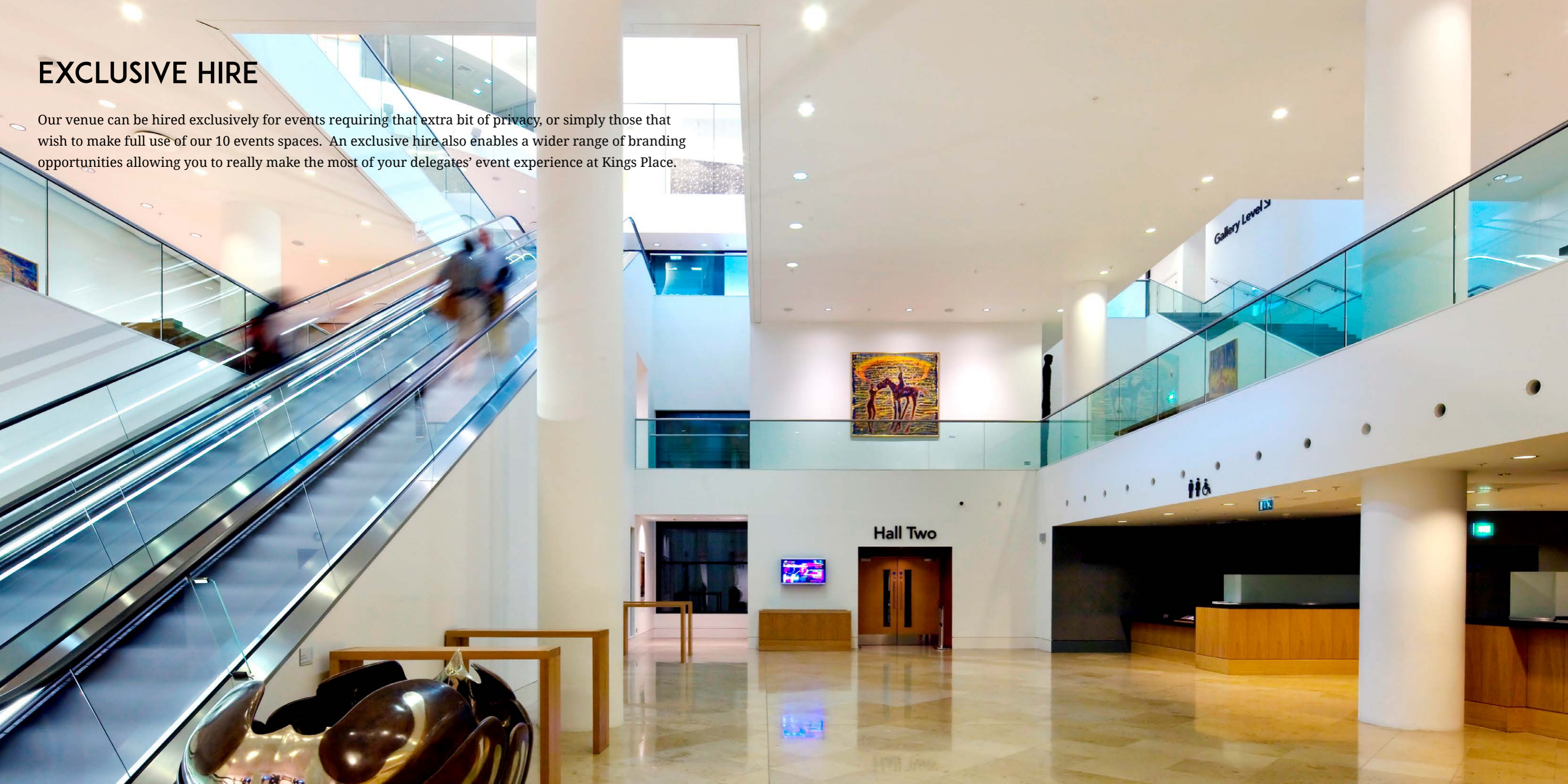
3 Course Seated Menus from £60.00



Based on the ground floor, Rotunda Bar and Restaurant can make a great addition to your event, whether it's a VIP dinner in the private dining room, drinks in the bar after a conference or a full venue hire for a summer BBQ on the terrace. Rotunda Bar and Restaurant boasts an enviable location with floor to ceiling windows overlooking the Regent's canal and terrace wrapping around the bar, restaurant and private dining room.

# EXCLUSIVE HIRE

Our venue can be hired exclusively for events requiring that extra bit of privacy, or simply those that wish to make full use of our 10 events spaces. An exclusive hire also enables a wider range of branding opportunities allowing you to really make the most of your delegates' event experience at Kings Place.



# BRANDING OPPORTUNITIES

Kings Place offers plenty of opportunities to get your brand noticed, allowing you to continue to communicate with your delegates outside the conference sessions.

We offer many different ways to bring your brand to life in the venue in partnership with a local graphics and printing company and have a comprehensive look-book of examples available.

We love a challenge and are committed to helping you turn your ideas into reality. The team work with a number of carefully selected suppliers but are open to collaborating with your chosen partners too.



Image courtesy of Matt Chung and Qualtrics

# CREATIVE PRODUCTION

Production is a critical part of events here at Kings Place and our spaces come with a higher level of technical inclusions and staffing than you may find in other venues. We have a vast, experienced production department that can assist with every element of your event production, from contemporary stage furniture to comprehensive streaming and broadcast packages. We are also happy for you to bring in your preferred external production company and have a number of industry partners we work with.



# LIVE EVENT & BROADCAST

Since opening in 2008, Kings Place has constantly strived to be one of the most technologically advanced event venues in London. Live event recording and broadcasting, as well as post-production work can all be handled here at Kings Place. So whether it's an audio recording of your event for a company podcast or a HD live stream to a dedicated URL accessible online, on mobile and on tablet, do get in touch as we'd love to discuss what we can do to make your event truly special. Below are a selection of our audio and visual solutions:

## AUDIO

### BASIC STEREO AUDIO RECORDING - FRONT OF HOUSE FEED

Stereo recording of your event - ideal for transcription and basic archival purposes. Not suitable for general release or future editing/post production.

### MULTI-TRACK AUDIO RECORDING

Multi-track recording is the industry standard method of recording your event. It allows presenters, instruments, vocals and more to be recorded on separate tracks to capture and mix the perfect performance. Ideal when quality is imperative.

## VIDEO

### SINGLE CAMERA VIDEO

HD broadcast camera kit and operator for basic video recordings in any of our spaces. Also great for pre or post event audience reactions and voxpops or back stage filming.

### TWO CAMERA VIDEO

Two HD broadcast camera kits and operators to get a variety of angles for editing purposes. Also great for interviews. Ask about additional cameras as needed, there's no limit.

### THREE CAMERA VIDEO

Our standard Hall One video package includes 3 high definition cameras, plus operators to capture your event from multiple angles. Ideal for general event coverage and basic musical performances. Additional cameras available on request.

### LIVE STREAMING OF ANY OF THE ABOVE VIDEO PACKAGES PRICE ON QUOTATION

HD quality content, integrated within your own website, or a custom microsite, delivered globally to web, mobile, tablet and connected TV.

### EDITING / POST PRODUCTION

State of the art audio/video post-production facilities allow us to create a highly polished and creative finished product including motion graphics, titling, editing and multitrack audio work and audio branding. We can deliver your project in a wide range of formats to suit any purpose.

Any external parties wishing to record audio or video at Kings Place will require a recording permit at a charge of £300. This permit is waived if any of the packages are booked.

# PRODUCTION SERVICES

Kings Place offers more than just typical venue AV - we deliver the entire production service. A Production Manager works with you to advise on all technical and operational aspects of the event and puts together a bespoke package based on your requirements. We provide a range of services including AV/projection, sound, lighting, IT, recording & live broadcast.

Our main spaces all come with a generous amount of production and technical inclusions, if you're looking at something additional to go the 'extra mile' then our in-house team of experts are on hand to help. Just let us know your requirements and we'll be able to provide a bespoke quote through our team or one of our partners.

## INDIVIDUAL HIRE ITEMS

*The following items can be hired on an individual basis. Please contact us for prices.*

Production Manager / Technical staff - Stage, Lighting, AV, Sound / Lapel Radio Mics / Handheld Radio Mics / Headset Radio Mics / Monitors / Analogue or Digital Mixing desks / Mobile PA system / Mac or PC Laptops / Cueing System / LED TV screens with Unicol stands / Comfort Monitors / LED Up lights / Countdown timers

## IT

IT Director / IT Technician / Dedicated hardwired internet connection / Fixed hardwired internet connection / Teleconferencing / Partitioned Wi-Fi

## TECHNICAL

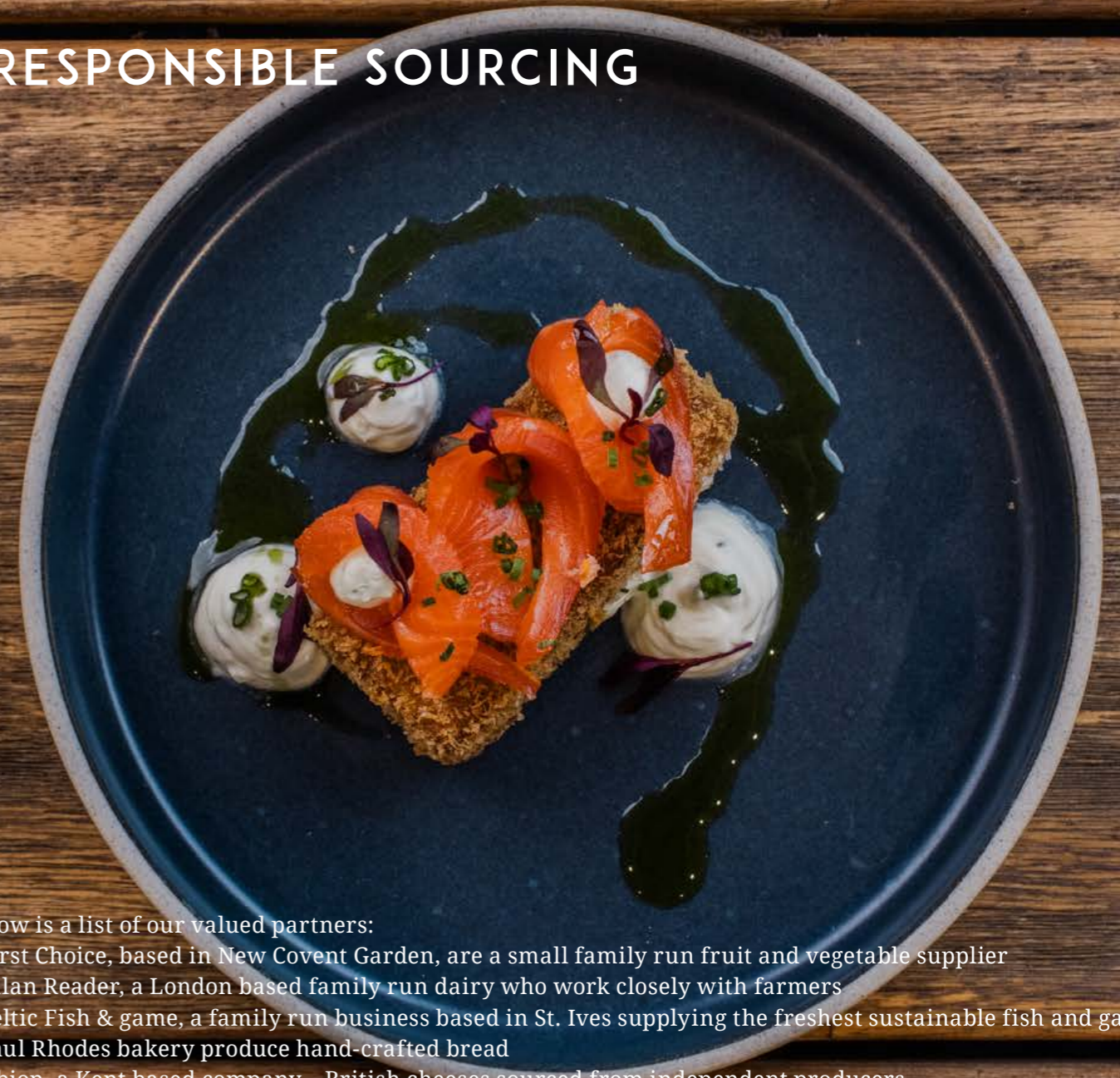
## QUALITY CATERING

All catering is managed in-house by Green & Fortune. We are the only leading caterer in the UK who own its own farm. Corneyside Farm is located in a beautiful part of the British Isles, Matfen, Northumberland. It allows us to include top-quality beef and lamb in even the most competitively priced menus. It's reared the traditional way by third generation farmers and Green & Fortune manages the slaughter, transportation, hanging and butchering of the meat on-site at Kings Place, in order to have complete control over the process.



Ask to see a copy of our full events menus, from day delegate catering to canapes, bowl food and plated menus, we have something suitable for every event.

## RESPONSIBLE SOURCING



Below is a list of our valued partners:

- First Choice, based in New Covent Garden, are a small family run fruit and vegetable supplier
  - Allan Reader, a London based family run dairy who work closely with farmers
  - Celtic Fish & game, a family run business based in St. Ives supplying the freshest sustainable fish and game
  - Paul Rhodes bakery produce hand-crafted bread
  - Albion, a Kent based company – British cheeses sourced from independent producers
  - Old spike Coffee, 65% of their profits directly fund their social and environmental goals which include tackling homelessness
  - Celtic Fish & Game, a family run business based in St. Ives supplying the freshest sustainable fish and game
- By using such quality and independently sourced British suppliers, and by producing over 90% of everything in house, we can offer a product that is of the highest standard

Kings Place | 90 York Way | London N1 9AG

T: 020 7014 2858

E: [events@kingsplaceevents.co.uk](mailto:events@kingsplaceevents.co.uk)

W: [www.kingsplaceevents.co.uk](http://www.kingsplaceevents.co.uk)

 @Kingsplaceevent

