

## Hall One Technical Specification

Details shown are correct as of January 2012  
Subject to change.

### Hall One Venue

(Appendix 3)

- 2.1 Stage Door Access:**  
Height - 2.0m  
Width - 1.8m
- 2.2 Stage Dimensions:**  
6x9m (Approx) See stage plan attached – **(Appendix 1)**  
Height stage to ceiling: 12m
- 2.3 Capacity:**  
Total x 415 ppl: Stalls x 312 - Balcony - 113x people  
There are 5 wheelchair positions in total, 2 in both the front and the back of the stalls and 1 in the balcony.
- 2.4 POWER:**  
125a 3P+N Outlet (Off-Stage Left) Various other single / two & three phase outlets
- 2.5 Air-conditioning:**  
Thermostatically controlled
- 2.6 N.B:** Various lecterns, tables, Music stands and stage seating available upon request. Please note that the below equipment does not come as standard but can be provided at a cost (POA) and is subject to availability.

### AV Equipment

- 3.1 Digital Video Controller:**  
Barco Folsom Encore Controller LC - Supports up to 64 inputs and 32 destinations.
- 3.2 Encore Video Processors:**  
3x Screen Pro-II video processor  
1x Image Pro video processor
- 3.3 Projectors:**  
2x Stacked Digital Projection Titan WUXGA Quad 3D capable, 16,000 lumens
- 3.4 Additional Projectors & Lenses Available Upon Request:**  
Barco NH12  
Barco ICON 600  
Samsung UF130 Presentation Station Digital OHP
- 3.5 Projection Screen:**  
Motorised and retractable projection screen high contrast  
16x9 Resolution – 6m wide x 3.375m high  
4x9 Resolution – 6m wide x 4.5m high
- 3.6 Display / Comfort Monitors Available Upon Request:**  
Sony KDL- 40V4000 Bravia - 40"full HD LCD TV  
JVC DT- V24L3 – 24" HD LCD Monitor  
JVC DT – V20L3D – 20" HD LCD Monitor  
Asus VH242H – 24" HD LCD TFT Monitor

AV Equipment Continued:

**3.7 DVD / Blue Ray Players Available Upon Request:**

HHB UDB89 Pro DVD / CD player  
Marantz DVD4001 DVD player  
Sony HDMI BDPS350 Blue Ray player

**3.8 Ancillaries Available Upon Request:**

Interspace Industries Mastercue V5 USB cueing system  
Interspace Industries Microcue 2 USB cueing system  
Interspace Industries countdown / timer 2 system  
Kensington wireless presenter with laser pointer.  
Apple iPad / iPod Dock - VGA converter  
HD Fury HDMI Converter

**3.9 N.B:** Various Fibre Optic, DVI, SDI, HDMI, VGA & Cat5 cables are available upon request.

---

## Audio Equipment

---

**4.1 F.O.H Audio Console / Mixing Desk:**

Digidesign D-Show w/Sidecar /FOH Rack/Stage Rack 48(I):16(O)

**4.2 Additional Audio consoles (F.O.H. / Monitors) – (Available upon request P.O.A)**

Yamaha M7CL 48(I):16(O) w/ 03 x MY8-AD96 + 03 x MY8-DA96 Cards Available Upon Request  
Soundcraft Spirit M12  
Soundcraft Spirit M8  
Soundcraft Spirit M4

**4.3 F.O.H. Rack:**

CD player: Tascam CD-01U-Pro  
CD Recorder: HHB CDR882 Dual Burn Dual Drive.

**4.4 F.O.H. RACK - Floating unit – EQ/Playback/Recording (Available upon request P.O.A)**

Klark Teknik DN360 Graphic EQ  
Tascam MD CD1 (CD player - MD recorder/player)

**4.5 Audio Signal Splitter:**

Whirlwind Super Concert Series 56:2 w/ 03 x MASS Multi-pin Connectors Splits

**4.6 Additional Audio Signal Splitter (Available upon request P.O.A)**

Whirlwind Super Concert Series 48:10 w/ 02 x MASS Multi-pin Connectors Splits  
ARX - Maxi Split (Line Distribution Splitter)  
Optocore system 48:16 x 3

**4.7 Signal Processing / EQ / Pre Amp / Dynamics:**

1x Klark Teknik DN360 Graphic EQ  
20x BSS AR-133 D.I. Box  
2x Focusrite Octopre LE 8-Channel Mic Pre-amp

**4.8 Audio Recording / Playback - N.B: Recording packages are available upon request (P.O.A)**

2x Pro Tools 9 HD2 w/C24 or Command 8 Controllers  
1x Tascam HD-P2 - Stereo Location Recorder  
2x HHB CDR882 Dual Burn Dual Drive CD Recorder  
1x Denon DND4500  
1x Tascam 202 MK1V (cassette recorder/player)  
1x HHB UDP-89  
1x Tascam MD CD1 (CD player - MD recorder/player)  
2x Tascam DV-DO1U

Audio Equipment Continued:

**4.9 Wireless System - (Available upon request P.O.A)**

3x Zaxcom Digital Receiver RX4900 (4x Stereo receivers 8x Channels of Audio Stereo Transmitters)  
6x Zaxcom Digital TRX800 handheld wireless transmitter  
4x Zaxcom Digital TRX700 Plug-on style transmitter  
6x Zaxcom Digital Wireless Transmitter TRX900 w/Optional Built-in IFB Receiver

**5.0 Hearing Induction loop:**

2x Amptronic 1LD 300 Professional Audio induction loop driver

**5.1 Wireless Comms System:**

Clear-Com HME DX200 Base Station with 4X BP200 Belt Packs and single ear headsets  
6x Dual channel Canford/Tecpro Belt Packs (2X 3pin XLR system) with single ear headsets

**5.2 Microphones:**

1x AEA R44C	2x Schoeps RC1200G & STR600
4x AKG C 414 B-XL II	2x Schoeps BF 250
2x AKG C 451 B	8x Sennheiser e604
2x Audix D6	4x Sennheiser MD 421-II
2x Beyer Dynamic M88 TG	2x Sennheiser MD 441-U
2x Beyer Dynamic M201	2x Sennheiser MKH 40-P48
4x C-Ducer CPM/3	6x Sennheiser MKE 2 Platinum
4x C-Ducer CPM/8	12x Shure SM58
4x Crown PCC-160	8x Shure SM57
4x DPA 4067 Headset (beige)	6x Shure Beta 58
4x DPA 4063 (beige) with Shure Tiny Q fittings, - String Clips & Tie Clips	4x Shure Beta 57
2x Electro-Voice RE 20	2x Shure Beta 52A
2x Neumann U87 with EA 87 w/EA87	4x Shure Beta 98 D/S
2x Neumann KM 183	2x Shure Beta 87A
4x Neumann KM 184	2x Shure Beta 56A
4x Neumann KMS 105	2x Shure Beta 91
1x Neumann USM69I	1x Shure SH 55
2x Schoeps CMC 5	2x Royer SF-12
	2x Schoeps MK4 g

N.B: A good supply of microphone stands, cables and stage boxes are available for hire upon request.

**5.3 Speakers - Main P.A.**

2x D&B Audiotechnik - Qi7 Flown (L&R)  
2x D&B Audiotechnik - E8 Flown (L&R - Stage Balcony)  
2x D&B Audiotechnik - E0 Flown (L&R - Stage Balcony)  
2x D&B Audiotechnik - QI7 (L&R)  
4x D&B Audiotechnik - E15 (L&R)  
2x D&B Audiotechnik - B2 (L&R)  
2x D&B Audiotechnik - E8 (Centre or L&R)

**5.4 Surround Sound:**

4x d&b Audiotechnik - E8 (Lower Left & Lower Right)  
4x d&b Audiotechnik - E8 (Upper Left & Upper Right)  
2x d&b Audiotechnik - E8 (Lower Rear Left & Lower Rear Right)  
2x d&b Audiotechnik - E8 (Upper Rear Left & Upper Rear Right)

**5.5 Surround Sound Pre-amplifier:**

Denon AV surround sound DNA7100 Preamplifier

**N.B: All Speakers Powered by D&B D12 & D6 Amplifiers**

---

## Lighting Supports, Truss & Rigging Equipment

---

**6.0 Lighting Stands:**

2x Manfrotto 083NWB Wind-Up Stands.  
Doughty Boom Bases (c/w various lengths of Scaff).

**6.1 Trussing:**

Prolyte H30D (Triangular Section) Truss – various lengths.

Lighting Equipment Continued:

**6.2 Rigging Equipment:**

8x Prolyte Prolyfte PLE12012 1000Kg Hoist.  
4x Channels of Motor Control and all necessary cable (Prolyft).

**N.B:** Please note that the below equipment does not come as standard but can be provided at a cost (POA) and is subject to availability.

---

## Touring Power and Distribution

---

**7.0** 125a 3P+N Outlet (Off-Stage Left)

The venue has a limited stock of distribution boxes to break this down into 63A and 32A 3P and 63A, 32A and 16A SP. However this equipment does not come as standard but rather can be provided at a cost (POA) and is subject to availability.

---

## Lighting Systems & Equipment

(See lighting plan: Appendix 2)

---

**7.1 ETC UNISON Architectural Lighting Control System:**

4x presets for house and general stage lighting including:

- Walk In
- Presentation
- Q & A
- Cinema

(Limited manual control of house lights and general stage lighting).

**7.2 ETC Congo Theatrical Lighting Control System:**

ETC Congo lighting desk  
ETC Congo Jr (networked back-up for main desk).  
Remote Focusing Unit  
Data Distribution via ACN (Ethernet) and ETC 2-Port Network Nodes

**7.3 Dimming:**

76x Channels of 3KW Dimming (ETC Matrix MII – sinewave and SCR)  
12x Channels of 3KW Switching (ETC Matrix MII and ETC Sensor)  
Control of Venue and Working Light Via DMX/EDMX (ETC Matrix and ETC Sensor)

**7.4 Lanterns: (Stage)**

**Moving-Heads:**

3x Martin TW1 Tungsten Moving-Head Washes (1200W, CMY colour mixing, zoom, IGBT and Mechanical dimming)  
3x ADB Warp Tungsten Moving-Head Profiles (800W, c/w scroller, zoom, iris and 4 fully rotatable shutters)

**7.5 LED**

8x JTE Pixelline Micro E (Backlighting for Upstage Scrim)

**7.6 Generics**

9x ETC S4 Profiles 19/26° (Over Balcony)  
15x ETC S4 Par c/w Apollo Scrollers (Over-Head 'Concert Wash')

**Balcony Level Booms (USL and USR):**

**7.7 Moving-Heads:**

2x Martin TW1 Tungsten Moving-Head Washes

**7.8 Generic Lanterns:**

10x ETC S4 Profiles 19/26/36/50 °  
2x ETC S4 Profiles 50° c/w Ocean Optics Seachanger

Lighting Equipment Continued:

**FOH:**

**7.9 Moving-Heads:**

4x ADB Warp Tungsten Moving-Head Profiles

**8.0 Generics**

4x ETC S4 Profiles 36° c/w Ocean Optics Seachanger.

**8.1 Additional Lighting Stock: (Available upon request P.O.A)**

The venue also owns a number of additional generic (ETC Source4 Profile and Pars, Selecon Rama Fresnels) & LED (JTE Pixelline Micro E) fixtures which may be provided subject to availability and at a cost.

**8.2 Gels and Gobos:**

The venue has a *limited* stock of colour filters and gobos. If you require any specific colours or designs we are happy to source these for you from our regular suppliers. Please note that if you wish to bring your own gobos our ETC Source4 Profiles take size B metal or glass gobos and our ADB Warps will take size B metal gobos only.

**8.3 Effects:**

Hazer - Look Solutions Unique 2.1 Hazer.

---

## Video / Recording Equipment

---

**9.0 N.B:** Additional video equipment and recording packages are available to hire upon request (P.O.A.)

**9.1 Video Camera:**

7x Remote controlled Bradley engineering HD Ball-Cam, 2 megapixel HD CMOS Camera (720 / 1080i)  
3x Canon XF305 - 1080p Full HD 2.37 Mpix, F/1.6-2.8, optical zoom: 18x,

**9.2 Vision Mixer:**

1x Panasonic AV-HS400E Multiformat live vision switcher  
2x Bradley Multi-function camera controller

**9.3 Digital Recording Device:**

1x Xserve intel xeon 4core 2.8GHz/8GB/2x80GB/ATI/single PSU (1u)  
1x Tascam LM-8ST 8 channel stereo audio line mixer  
1x AJA Ki-Pro portable pro-res file recorder

**9.4 Final Cut Pro HD Edit Suite.**

**N.B:** Additional Video equipment and packages are available to hire upon request (P.O.A.)

---

## Loading / Parking

---

**10.1 Loading Bay Access Times:**

Mon - Fri - 7:00am 19:00pm  
Sat - 8:00am - 12:00pm  
Sun - Closed

**N.B:** Outside of these times may incur extra costs. Kings place offers very limited car parking facilities. All passes must be arranged before arrival

**Lift Measurements & Weight Restrictions:**

**10.2 Loading Bay:**

13ft / 3.95m high  
Maximum size of truck the loading bay can accommodate is 17.5 tonne

**10.3 Car Lift:**

5000kg maximum weight load  
2m high  
2.8m wide  
6m deep

Measurements & Weight Restrictions Continued:

- 10.4 Goods Lift 2:**  
1600kg maximum weight load  
2.1m high  
2.1 wide  
3.5m deep

- 10.5 Piano Lift:**  
4000kg maximum weight load  
2.1m high  
2m wide  
3.5m deep

---

**Other**

---

- 11.0** Please advise us immediately of your intent to use any form of pyrotechnics or live fire as we have specific policies relating to this.

Please contact the Senior Events Technician for more information.

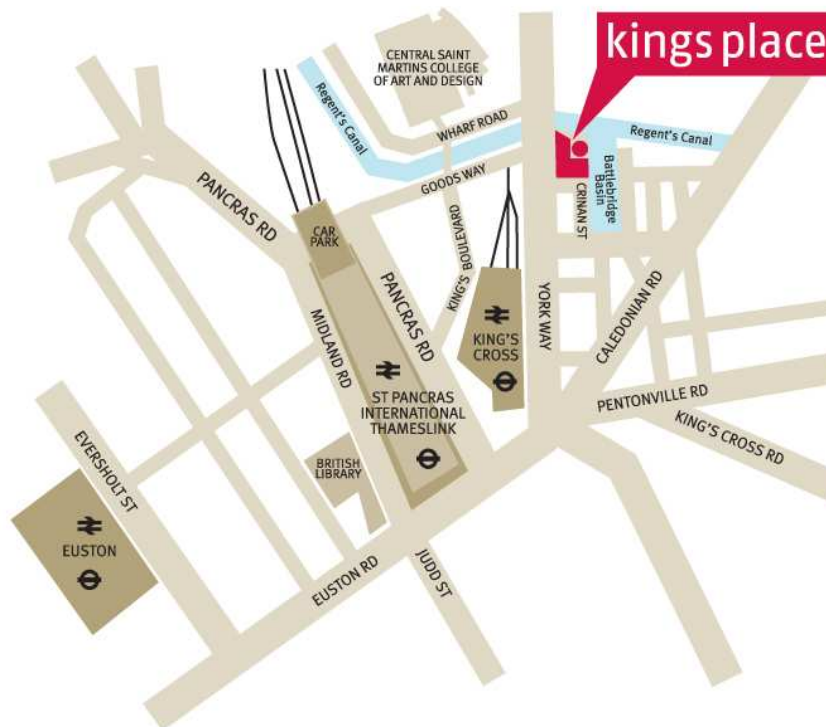
---

**Travelling To Kings Place**

---

- 12.0** Kings Place is situated just a few minutes walk from Kings Cross and St Pancras stations, one of the most connected locations in London and now the biggest transport hub in Europe.

The loading bay can be accessed from Crinan St.



---

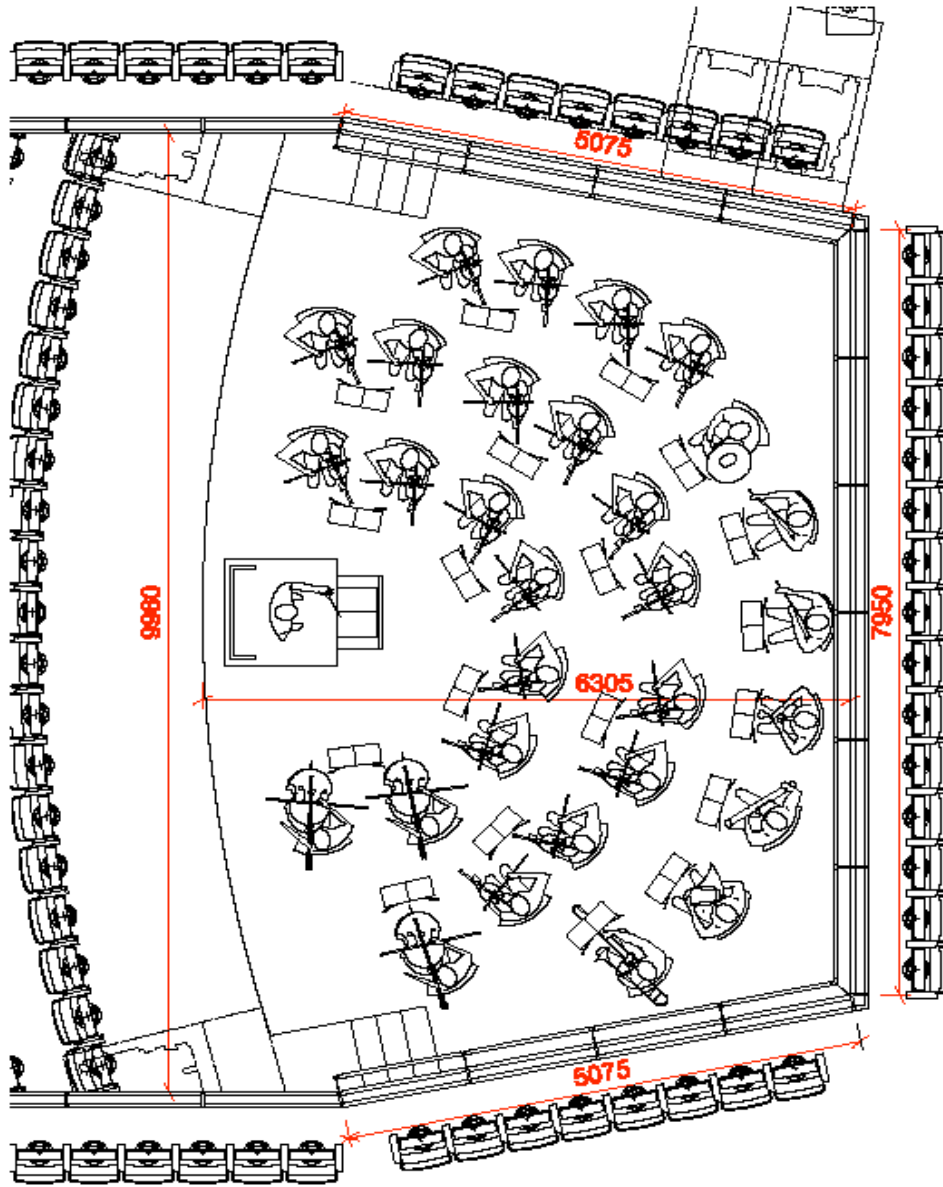
## Hall One (Appendix 3)

---



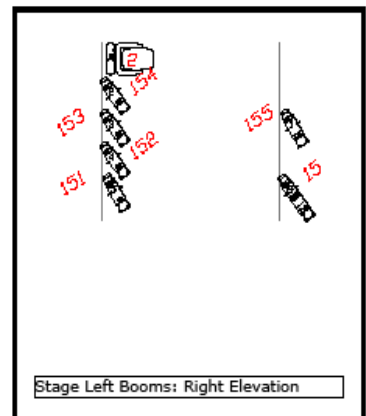
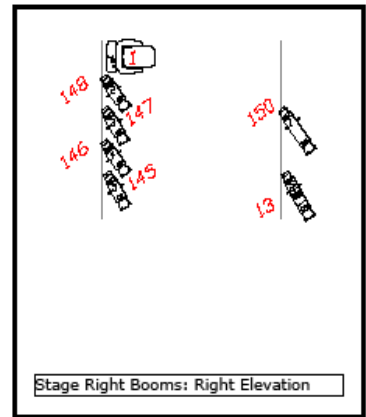
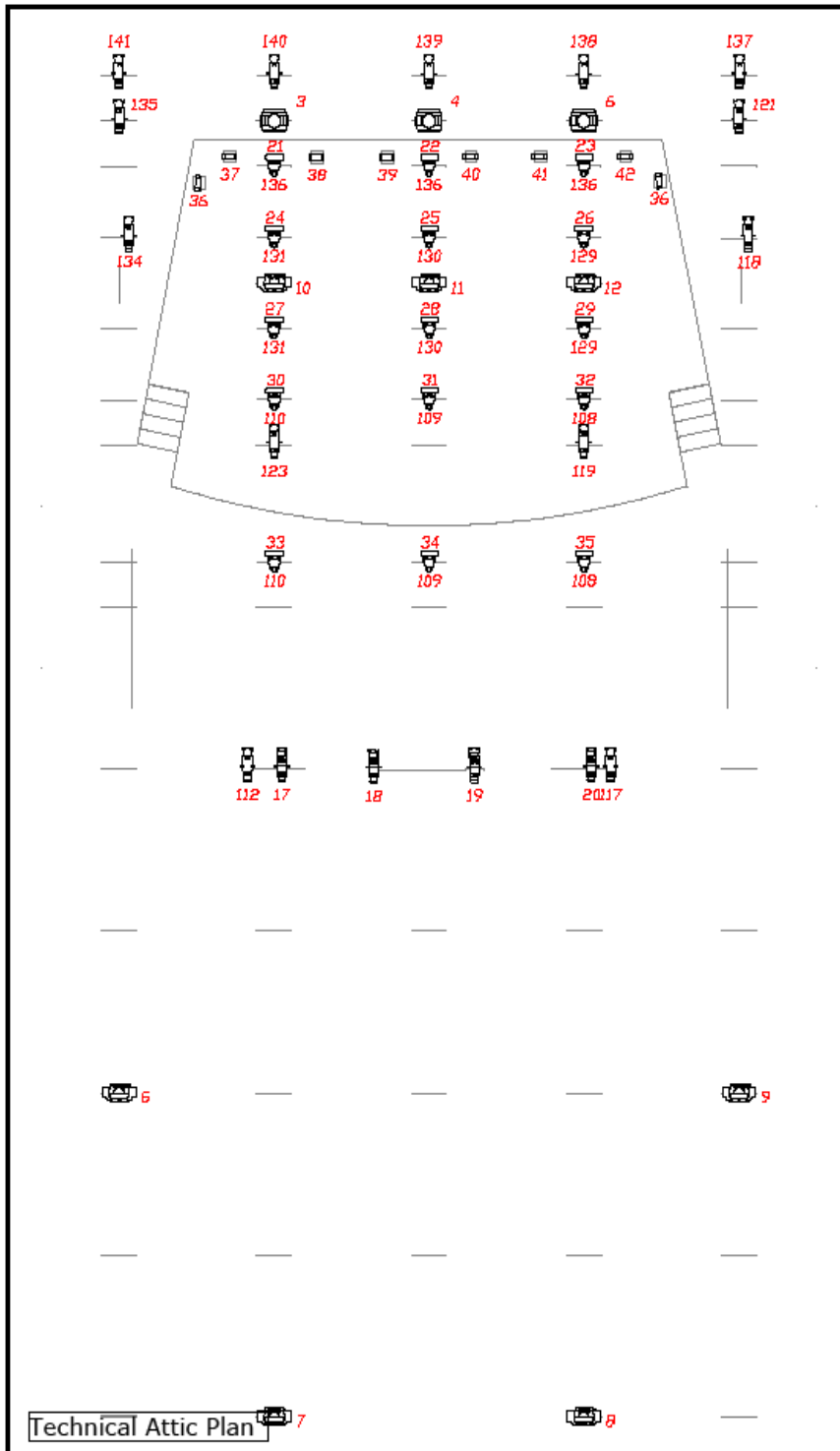


# Stage plan (Appendix 1)





# Lighting Plan (Appendix 2)



Kings Place Hall 1

Symbol	Name
	Warp M 22-50deg Plan
	Mac TW1 Wash Plan
	Source 4 750 26
	Source 4 750 50 w/SeaChanger
	Source 4 750 19
	Source 4 Par NSP v3
	Source 4 750 36
	Pixel Line Micro W Plan
	Warp M 12-30deg Plan
	Source 4 750 26 w/SeaChanger

Room Dimensions:  
 Width: 13 m  
 Depth: 15.8 m  
 Height: 12 m

Stage Dimensions:  
 Width (Front): 8.9m  
 Width (Rear): 8m  
 Depth (From Centre): 6.4m  
 Height: 0.9m

Touring Power:  
 125a TP+N

These measurements are based upon drawings not prepared by Kings Place Music Foundation. Kings Place Music Foundation does not accept liability for any loss or damage arising from errors in these measurements howsoever caused. All dimensions given to nearest .1 m. Users intending to rely on these measurements should independently check the accuracy thereof.



Venue: Kings Place Hall 1

Date: 15/08/2011

# Kings Place Music Foundation (Appendix 3)

