

Hall Two Technical Specification



Kings Place Music Foundation
90 York Way,
London
N1 9AG
www.kingsplace.co.uk

Details shown are correct as of January 2012

Hall Two Venue

(Appendix 1)

- 2.1 Stage Door Access:**
Height - 2.0m
Width - 1.8m
- 2.2 Stage Height:** 600mm
Stage to ceiling: 5m
(Appendix 2)
N.B: various stage configurations are available upon request (P.O.A).
- 2.3 Capacity:**
200x interlocking removable seats
4x wheelchair and carer positions
- 2.4 POWER:**
125a 3P+N Outlet (Off-Stage Left) Various other single / two & three phase outlets
- 2.5 Air-conditioning:**
Thermostatically controlled
- 2.6 N.B:** Various lecterns, tables, Music stands and stage seating available upon request. Please note that the below equipment does not come as standard but can be provided at a cost (POA) and is subject to availability.

AV Equipment

- 3.1 Digital Video Controller:**
Barco Encore Controller SC - Supports up to 24 inputs and 6 destinations
- 3.2 Encore Video Processors:**
2x Screen Pro-II video processor
1x Image Pro video processor
- 3.3 Projectors:**
2x stacked Digital Projection Highlite 660 - 8000 Lumen digital projectors
- 3.4 Additional Projectors & Lenses Available Upon Request:**
Barco NH12
Barco ICON 600
Samsung UF130 Presentation Station Digital OHP
- 3.5 Projection Screen:**
Motorised and retractable projection screen high contrast
16x9 Resolution – 6m wide x 3.375m high
4x9 Resolution – 6m wide x 4.5m high
- 3.6 Display / Comfort Monitors Available Upon Request:**
Sony KDL- 40V4000 Bravia - 40"full HD LCD TV
JVC DT- V24L3 – 24" HD LCD Monitor
JVC DT – V20L3D – 20" HD LCD Monitor
Asus VH242H – 24" HD LCD TFT Monitor

AV Equipment Continued:

- 3.7 DVD / Blue Ray Players Available Upon Request:**
HHB UDB89 Pro DVD / CD player
Marantz DVD4001 DVD player
Sony HDMI BDPS350 Blue Ray player
- 3.8 Ancillaries Available Upon Request:**
Interspace Industries Mastercue V5 USB cueing system
Interspace Industries Microcue 2 USB cueing system
Interspace Industries countdown / timer 2 system
Kensington wireless presenter with laser pointer.
Apple iPad / iPod Dock - VGA converter
HD Fury HDMI Converter
- 3.9 N.B:** Various Fibre Optic, DVI, SDI, HDMI, VGA & Cat5 cables are available upon request.

Audio Equipment

- 4.1 F.O.H Audio Console / Mixing Desk:**
Yamaha M7CL 48(I):16(O) w/ 03 x MY8-AD96 + 03 x MY8-DA96 Cards Available Upon Request
- 4.1.1 Additional Audio consoles (F.O.H. / Monitors) – (Available upon request P.O.A)**
Yamaha M7CL 48(I):16(O) w/ 03 x MY8-AD96 + 03 x MY8-DA96 Cards Available Upon Request
Soundcraft Spirit M12
Soundcraft Spirit M8
Soundcraft Spirit M4
- 4.1.2 F.O.H. Rack:**
CD player: Tascam CD-01U-Pro
CD Recorder: HHB CDR882 Dual Burn Dual Drive.
- 4.1.3 F.O.H. RACK - Floating unit – EQ/Playback/Recording (Available upon request P.O.A)**
Klark Teknik DN360 Graphic EQ
Tascam MD CD1 (CD player - MD recorder/player)
- 4.1.4 Audio Signal Splitter:**
Whirlwind Super Concert Series 56:2 w/ 03 x MASS Multi-pin Connectors Splits
- 4.1.5 Additional Audio Signal Splitter (Available upon request P.O.A)**
Whirlwind Super Concert Series 48:10 w/ 02 x MASS Multi-pin Connectors Splits
ARX - Maxi Split (Line Distribution Splitter)
Optocore system 48:16 x 3
- 4.1.6 Signal Processing / EQ / Pre Amp / Dynamics:**
1x Klark Teknik DN360 Graphic EQ
20x BSS AR-133 D.I. Box
2x Focusrite Octopre LE 8-Channel Mic Pre-amp
- 4.1.7 Audio Recording / Playback - N.B: Recording packages are available upon request (P.O.A)**
2x Pro Tools 9 HD2 w/C24 or Command 8 Controllers
1x Tascam HD-P2 - Stereo Location Recorder
2x HHB CDR882 Dual Burn Dual Drive CD Recorder
1x Denon DND4500
1x Tascam 202 MK1V (cassette recorder/player)
1x HHB UDP-89
1x Tascam MD CD1 (CD player - MD recorder/player)
2x Tascam DV-DO1U

Audio Equipment Continued:

4.1.8 Wireless System - (Available upon request P.O.A)

3x Zaxcom Digital Receiver RX4900 (4x Stereo receivers 8x Channels of Audio w/ Stereo Transmitters
6x Zaxcom Digital TRX800 handheld wireless transmitter
4x Zaxcom Digital TRX700 Plug-on style transmitter
6x Zaxcom Digital Wireless Transmitter TRX900 w/Optional Built-in IFB Receiver

4.1.9 Hearing Induction loop:

2x Amptronic 1LD 300 Professional Audio induction loop driver

4.2.1 Wireless Comms System:

Clear-Com HME DX200 Base Station with 4X BP200 Belt Packs and single ear headsets
6x Dual channel Canford/Tecpro Belt Packs (2X 3pin XLR system) with single ear headsets

4.2.2 Microphones:

1x AEA R44C	2x Schoeps RC1200G & STR600
4x AKG C 414 B-XL II	2x Schoeps BF 250
2x AKG C 451 B	8x Sennheiser e604
2x Audix D6	4x Sennheiser MD 421-II
2x Beyer Dynamic M88 TG	2x Sennheiser MD 441-U
2x Beyer Dynamic M201	2x Sennheiser MKH 40-P48
4x C-Ducer CPM/3	6x Sennheiser MKE 2 Platinum
4x C-Ducer CPM/8	12x Shure SM58
4x Crown PCC-160	8x Shure SM57
4x DPA 4067 Headset (beige)	6x Shure Beta 58
4x DPA 4063 (beige) with Shure Tiny Q fittings, - String Clips & Tie Clips	4x Shure Beta 57
2x Electro-Voice RE 20	2x Shure Beta 52A
2x Neumann U87 with EA 87 w/EA87	4x Shure Beta 98 D/S
2x Neumann KM 183	2x Shure Beta 87A
4x Neumann KM 184	2x Shure Beta 56A
4x Neumann KMS 105	2x Shure Beta 91
1x Neumann USM69I	1x Shure SH 55
2x Schoeps CMC 5	2x Royer SF-12
	2x Schoeps MK4 g

N.B: A good supply of microphone stands, cables and stage boxes are available for hire upon request.

4.2.3 Speakers - Main P.A.

2x D&B Audiotechnik - Qi7 (L&R)
2x D&B Audiotechnik - E15 (L&R)
2x D&B Audiotechnik - B2 (L&R)

4.2.4 P.A / Surround or monitor (Drum fill)

4x D&BAudiotechnik - E12 (L&R)
4x D&B Audiotechnik - E15 (L&R)

4.2.5 Surround Sound Pre-amplifier:

Denon AV surround sound DNA7100 Preamplifier

N.B: All Speakers Powered by D&B D12 & D6 Amplifiers

Lighting Supports, Truss and Rigging Equipment

(Lighting plan: Appendix 3)

Please note that the below equipment does not come as standard but can be provided at a cost (POA) and is subject to availability.

5.1 Lighting Stands

2x Manfrotto 083NWB Wind-Up Stands.
Doughty Boom Bases (c/w various lengths of Scaff).

5.2 Trussing

Polyte H30D (Triangular Section) Truss – various lengths

Touring Power and Distribution

6.1 63a 3P+N Outlet (Backstage)

The venue has a limited stock of distribution boxes to break this down into 32A 3P and 32A and 16A SP. However this equipment does not come as standard but rather can be provided at a cost (POA) and is subject to availability.

Lighting Systems and Equipment

7.1.2 ETC UNISON Architectural Lighting Control System:

Limited manual control of house lights and general stage lighting:

4x presets for house and general stage lighting including:

- Walk In
- Presentation
- Q and A
- Cinema

7.1.3 ETC Congo Theatrical Lighting Control System:

ETC Congo lighting desk

ETC Congo Jr (networked back-up for main desk).

Remote Focusing Unit

Data Distribution via ACN (Ethernet) and ETC 2-Port Network Nodes

7.1.4 Dimming:

48x Channels of 3KW Dimming (ETC Sensor, IES iSine)

6x Channels of 3KW Switching (ETC Sensor)

Control of Venue and Working Light Via DMX/EDMX (ETC Sensor)

Lanterns (Stage):

7.1.5 Moving-Heads:

7x Martin TW1 Tungsten Moving-Head Washes (1200W, CMY colour mixing, zoom, IGBT & Mechanical dimming)

7.1.6 Generics:

4x ETC S4 Profiles 36°

24x ETC S4 Par ('Four Colour Wash')

8x Selecon Rama Fresnels (over-head 'Concert Wash')

FOH:

7.1.7 Moving-Heads:

4x ADB Warp Tungsten Moving-Head Profiles (800W, c/w scroller, zoom, iris and 4 fully rotatable shutters)

7.1.8 Generics:

4x ETC S4 Profiles 36°

2x ETC S4 Profiles 36° c/w Ocean Optics Seachanger

7.1.9 Additional Lighting Stock: (Available upon request P.O.A)

The venue also owns a number of additional generic (ETC Source4 Profile and Pars, Selecon Rama Fresnels) and LED (JTE Pixelline Micro E) fixtures which may be provided subject to availability and at a cost.

7.2.1 8.2Gels and Gobos:

The venue has a *limited* stock of colour filters and gobos. If you require any specific colours or designs we are happy to source these for you from our regular suppliers. Please note that if you wish to bring your own gobos our ETC Source4 Profiles take size B metal or glass gobos and our ADB Warps will take size B metal gobos only.

7.2.2 Effects:

Hazer - Look Solutions unique 2.1 Hazer.

Video / Recording Equipment

8.1 N.B: Additional video equipment and recording packages are available to hire upon request (P.O.A.)

8.2 Video Camera:

Remote controlled Bradley engineering HD Ball-Cam, 2 megapixel HD CMOS Camera (720 / 1080i)
Canon XF305 - 1080p Full HD 2.37 Mpix, F/1.6-2.8, optical zoom: 18x,

8.3 Vision Mixer:

Panasonic AV-HS400E Multiformat live vision switcher
Bradley Multi-function camera controller

8.4 Digital Recording Device:

Xserve intel xeon 4core 2.8GHz/8GB/2x80GB/ATI/single PSU (1u)
Tascam LM-8ST 8 channel stereo audio line mixer
AJA Ki-Pro portable pro-res file recorder

8.5 Final Cut Pro HD Edit Suite.

N.B: Additional Video equipment and packages are available to hire upon request (P.O.A.)

Loading / Parking

9.1 Loading Bay Access Times:

Mon - Fri - 7:00am 19:00pm
Sat - 8:00am - 12:00pm
Sun - Closed

N.B: Outside of these times may incur extra costs. Kings place offers very limited car parking facilities. All passes must be arranged before arrival

Lift Measurements & Weight Restrictions:

9.2 Loading Bay:

13ft / 3.95m high
Maximum size of truck the loading bay can accommodate is 17.5 tonne

9.3 Car Lift:

5000kg maximum weight load
2m high
2.8m wide
6m deep

9.4 Goods Lift 2:

1600kg maximum weight load
2.1m high
2.1 wide
3.5m deep

9.5 Piano Lift:

4000kg maximum weight load
2.1m high
2m wide
3.5m deep

Other

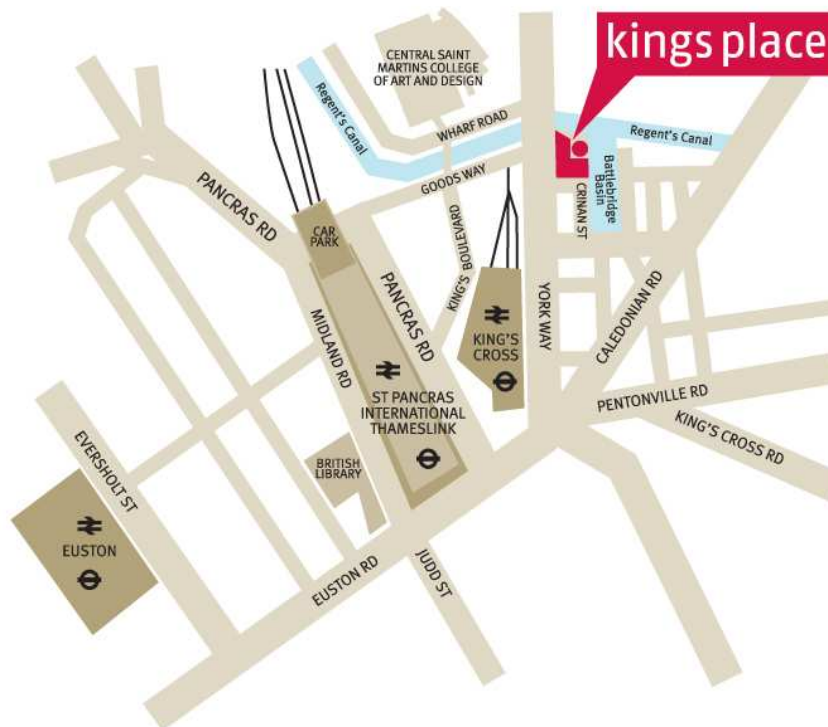
- 9.1** Please advise us immediately of your intent to use any form of pyrotechnics or live fire as we have specific policies relating to this.

Please contact the Senior Events Technician for more information.

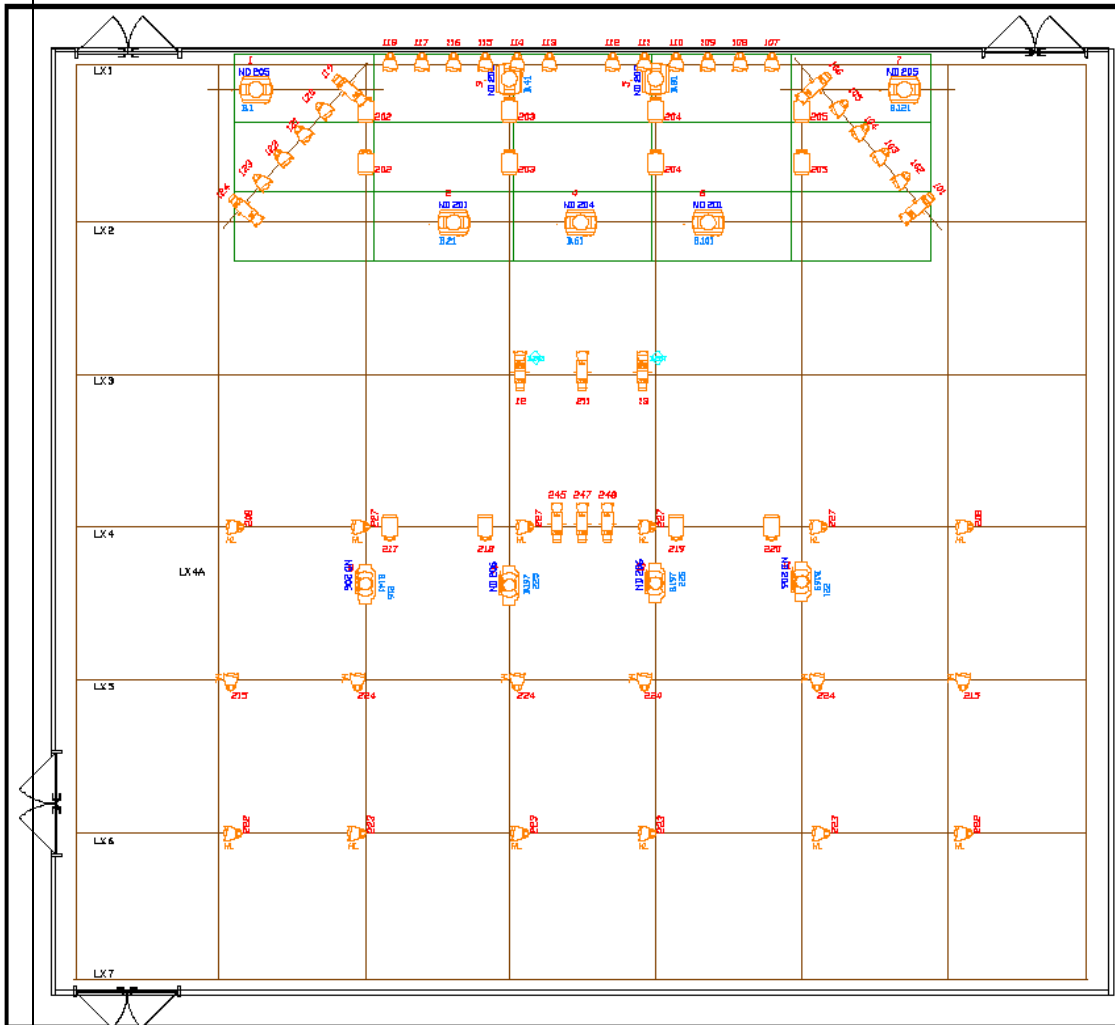
Travelling To Kings Place

- 10.0** Kings Place is situated just a few minutes walk from Kings Cross and St Pancras stations, one of the most connected locations in London and now the biggest transport hub in Europe.

The loading bay can be accessed from Crinan St.



Lighting Plan (Appendix 3)



Symbol	Name	Wattage	Count
	Mac TW1 Wash	1200	7
	Warp M 22-50deg	800	4
	Sel Rama 150 Fresnel	1200	12
	Source 4 36deg	750	7
	Source 4 26deg	750	3
	Source 4 Par MFL v3	575	38

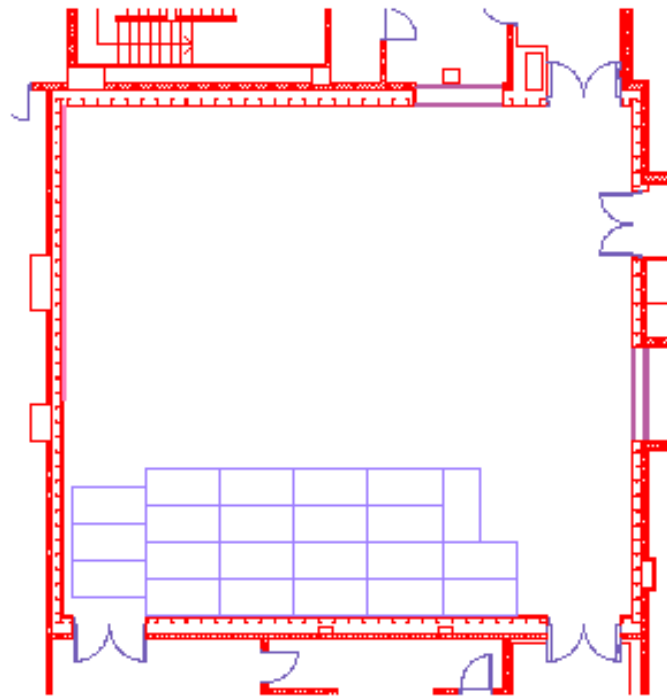
ROOM DIMENSIONS
 Width - 15.28m
 Depth - 13.66m
 Height - 7.80m
 Grid Height - 8.02m
 Stage Dimensions
 Width - 10.00m
 Depth - 3.00m
 Height - 0.60m

Venue: Kings Place Hall 2
 Date: 16/11/2010



wyswyg perform

Hall Two (Appendix 2)



Kings Place Music Foundation (Appendix 1)

